

We build the home. You create the view.



TWIN TOWN HOMES, INC.
ROUTE 26, 804 MAIN ST.
OXFORD, ME 04270
(207) 539-4472
1-800-670-3808
www.twintownhomes.com

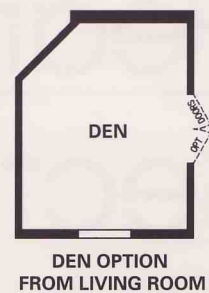
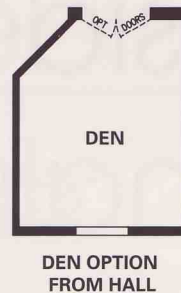
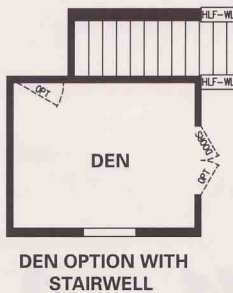
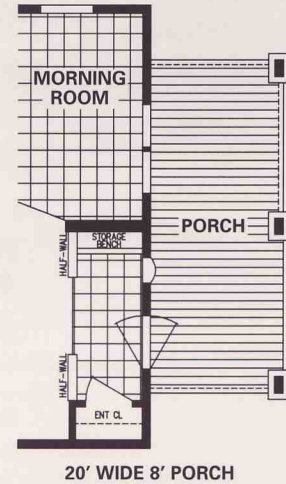
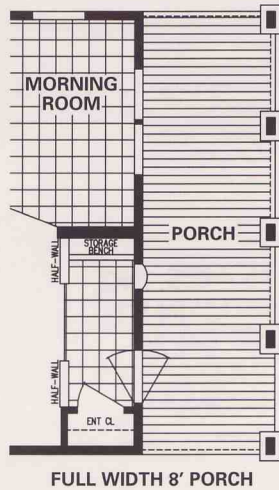
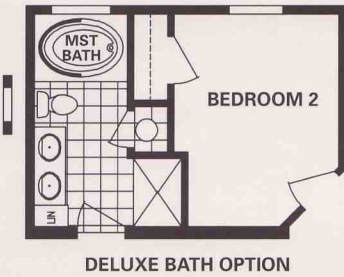
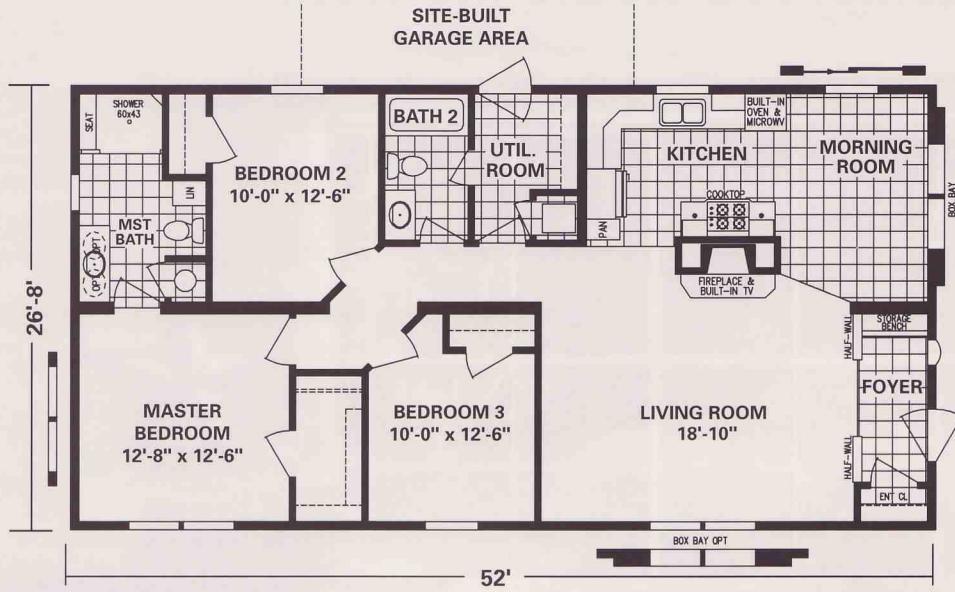
Hearthside Sectionals

Marlette[®]
Lewistown

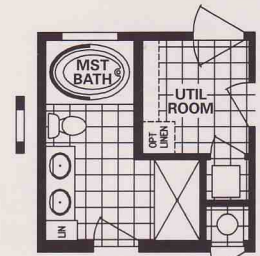
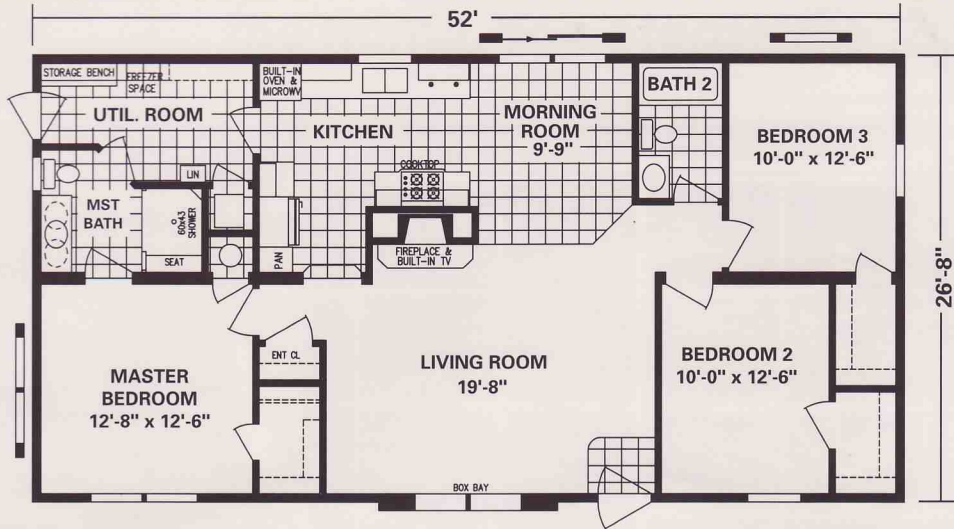
Designed For Living. Built For Life.



Hearthside V MODEL 5228-508 • 1387 SQ. FT.



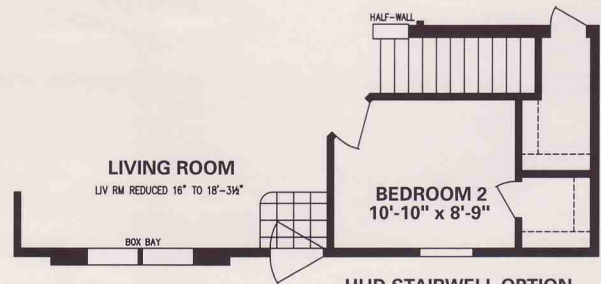
Hearthside I MODEL 5228-405 • 1387 SQ. FT.



DELUXE BATH OPTION WITH 60" SHOWER

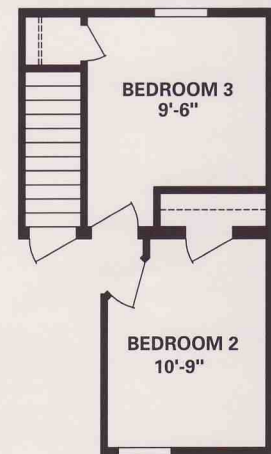
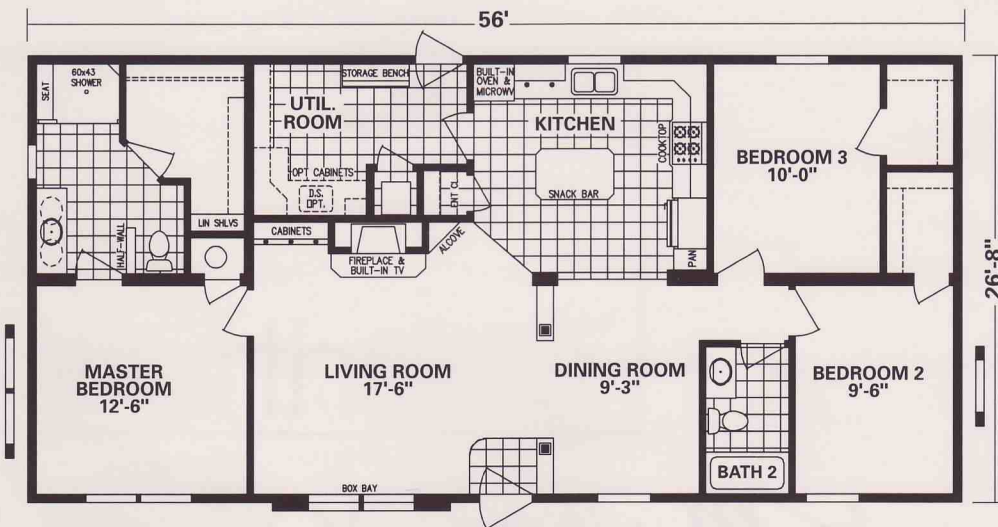


MOD STAIRWELL OPTION

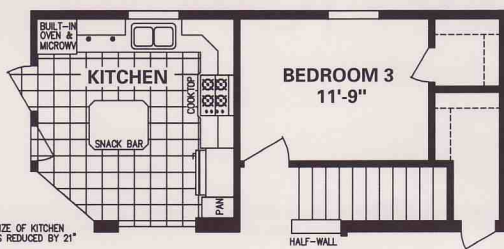


HUD STAIRWELL OPTION

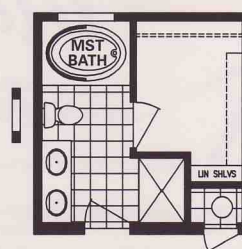
Hearthside IV MODEL 5628-363 • 1493 SQ. FT.



MOD STAIRWELL OPTION

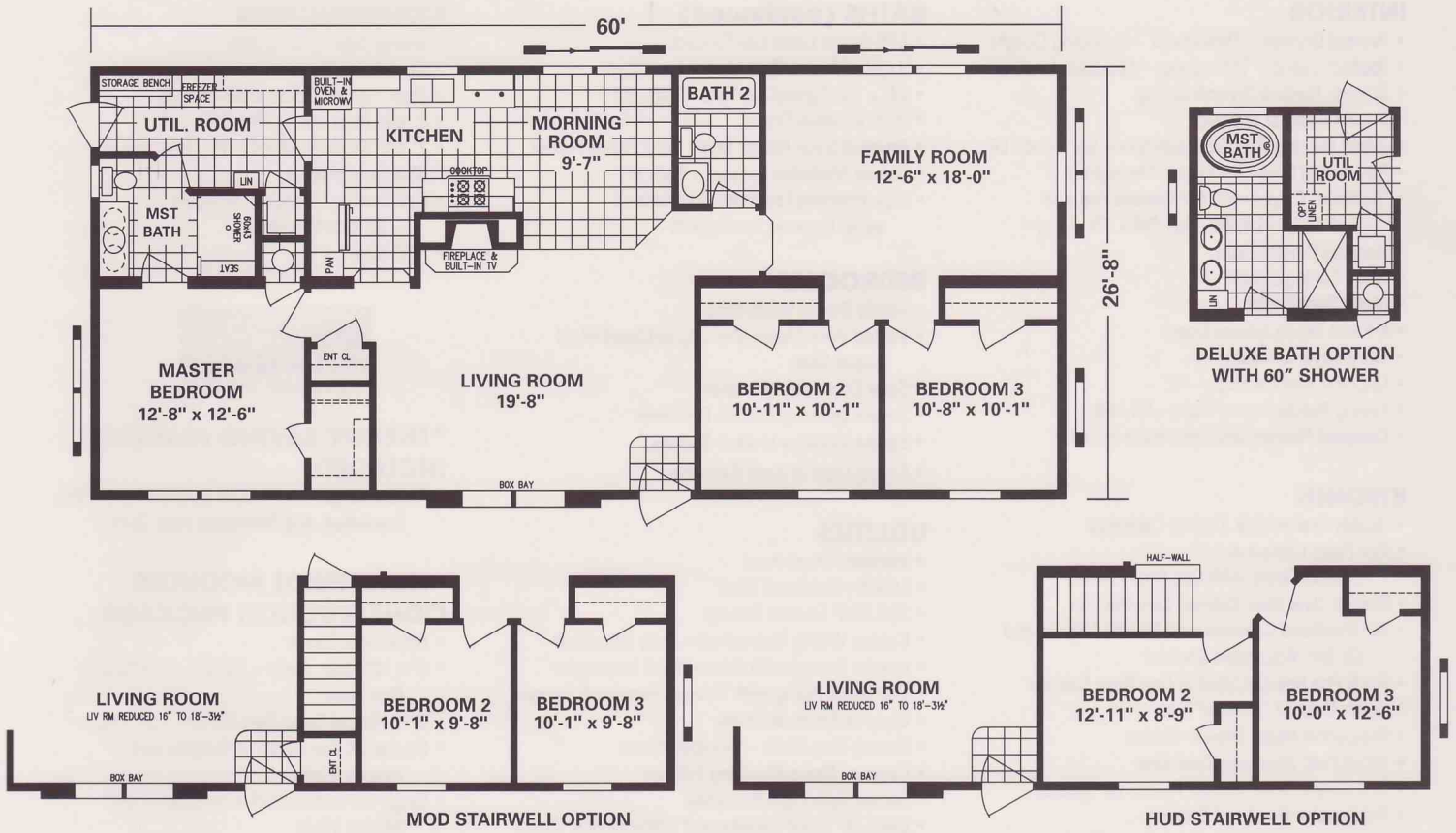


HUD STAIRWELL OPTION

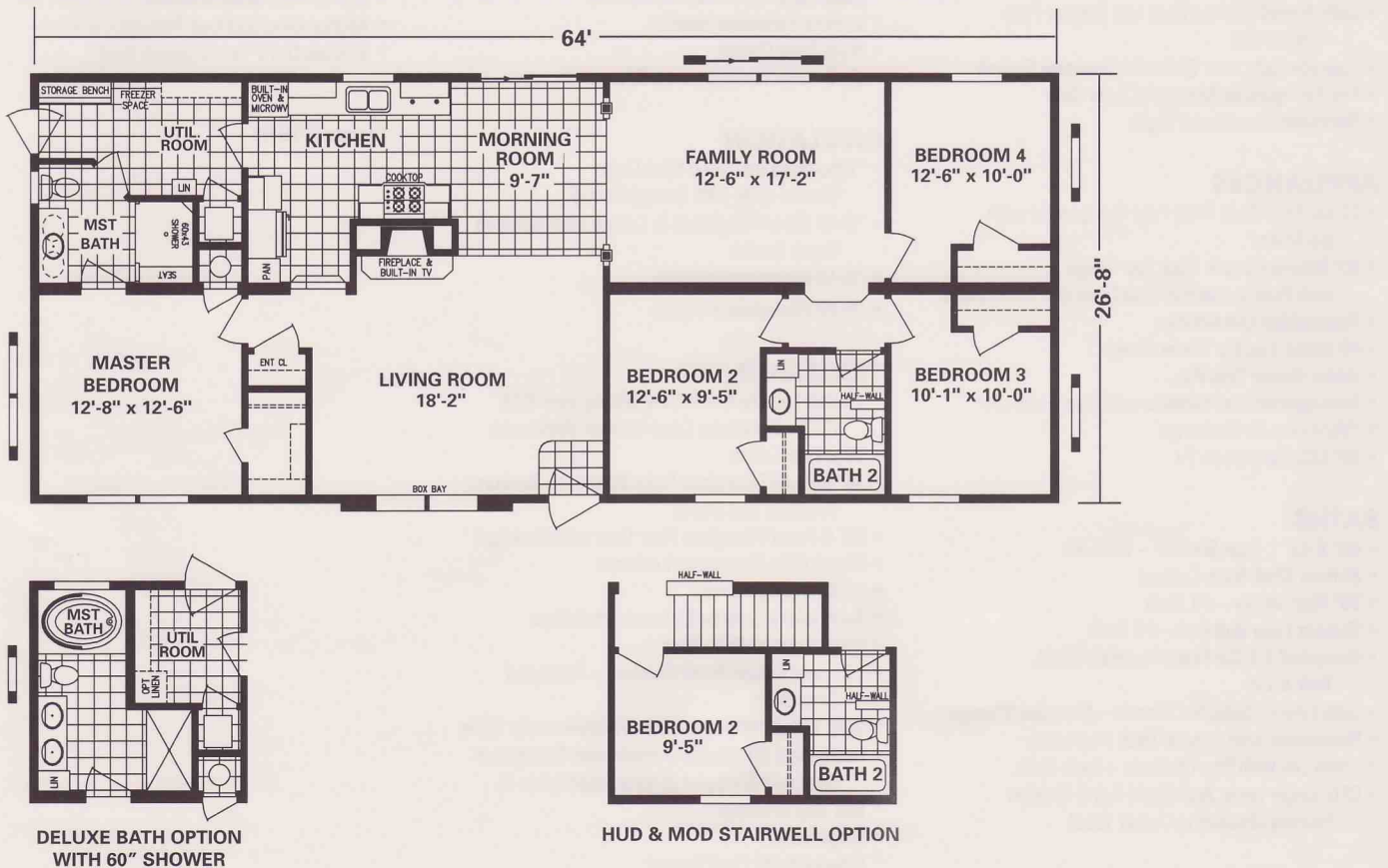


DELUXE BATH OPTION

Hearthside II MODEL 6028-600 • 1600 SQ. FT.



Hearthside III MODEL 6428-69 • 1706 SQ. FT



Hearthside Sectional Points of Pride

INTERIOR

- Painted Drywall – Throughout – Excluding Closets
- Vaulted Ceiling – Throughout – Spacious Looking
- Smooth Painted Drywall Ceiling
- 7 1/2' Ceiling at Sidewall
- Wood Burning Fireplace with Stone Surround - LR
- Residential Drape Package – Throughout
- "Acclaim" Carpet with 6# Rebond Pad and Tack Strip – LR, DR, Hall, BR's, FR
- Hanging Dinette Light
- Glass Ceiling Lights
- Metal Door Knobs
- 6-Panel White Interior Doors
- Entry Foyer Linoleum
- Upgrade Trim Package – "C"
- Ceiling Paddle Fan w/ Light – LR / FR
- Compact Fluorescent Light Bulbs Installed

KITCHEN

- Quality Crafted Oak Kitchen Cabinetry
- Flat Panel Cathedral Cabinet Doors with Oak Face Frames
- Drawer Over Door Cabinet Construction
- 30" Overhead Cabinets with Finished Backs and (2) 3/4" Adjustable Shelves
- Pot & Pan Roll-Out Shelf in One Base Cabinet
- Under Cabinet "Bottom" Trim
- Residential Metal Drawer Guides
- 33"x22"x8" Stainless Steel Sink
- CFG Single Lever Kitchen Faucet w/ Sprayer
- Refrigerator Overhead Cabinet
- Deluxe (20 mil) Double Wear Layer Vinyl Floor Covering – Easy Care – No Wax
- High Pressure Laminated Countertops with 6" Ceramic Backsplash
- Satin Nickel Cabinet Door and Drawer Pulls – P4555 SN
- Upgrade Light over Sink with Separate Switch
- Fire Extinguisher Mounted Under Sink
- Recessed Fluorescent Light

APPLIANCES

- 21 Cu. Ft. 2 Door Frost Free Refrigerator with Ice Maker
- 30" Deluxe Electric Cook Top Range with Built-In Electric Wall Oven and Microwave
- Potscrubber Dishwasher
- 40 Gallon Electric Water Heater
- Water Heater Drip Pan
- Auto-ignition Gas Furnace with Roof Extension
- *Ventilaire Air Exchange
- 32" LCD Flatscreen TV

BATHS

- 60" X 43" 1-Seat Shower – Bath #1
- Bottom Shelf Base Cabinet
- 36" High Vanity - #1 Bath
- Shower Liner and Rod - #2 Bath
- Elongated 1.6 Gal Flush Porcelain Stool, Tank & Lid
- Bath Linen – Selected Models – Provides Storage
- Receptacle with Ground Fault Interrupter
- China Lav with Pop-Up Drain – Each Bath
- CFG Single Lever Anti-Scald Tub & Shower Faucets (Excluding Corner Tubs)

BATHS (continued)

- CFG Single Lever Lav Faucets
- *Lighted Power Bath Vent – Each Bath
- 24" x 24" Curbed Skylight – Bath #2
- Bath Window Drape
- Brushed Satin Nickel Towel Bar / Tissue Holder
- Deluxe Medicine Cabinet – Bath #1
- High Pressure Laminate Countertops w/ 6" Ceramic Backsplash

BEDROOMS

- Family Styled Wardrobes
- Vented Wire Closet Shelving w/Closet Maid Super Slide
- Color Coordinated Drapes
- Smoke Detector in each Bedroom
- Egress Window in each Bedroom
- Ceiling Light in each Bedroom

UTILITIES

- Washer / Dryer Area
- Laundry Overhead Shelf
- 200 AMP Electric Service
- Copper Wiring Throughout – Fully Grounded
- Interior Recept with Ground Fault Interrupter
- Gas Black Piping with Valve at Furnace & Range
- Chrome Risers at Stools
- Beauty Ring Seals – Plumbing Lines
- Copper / Brass Plumbing Fittings
- Rocker Type Light Switches
- Class "A" Lined Furnace and Water Heater Closet
- Plumb and Wire for Washer and Dryer
- In-House Main Water Shut-Off Valve
- Furnace Closet Sprinkler
- Water Shut-Off Lavs, Stools, Sink
- In-Floor Perimeter Heating
- Front Door Chime
- (2) Exterior Recepts. with GFI

INSULATION

- *Fiberglass Insulated Heat Duct (Saves up to 18% Energy Costs)
- *R-40 Blown Insulation in Ceiling with Sprayed Vapor Barrier
- *R-19 Fiberglass in Walls
- *R-22 Fiberglass in Floors

* EXTERIOR

- *Dutch Lap Double 4" Vinyl Siding over 7/16" O.S.B. Sheathing Covered with Windwrap
- Vinyl End Soffits
- 36" 6-Panel Fiberglass Front Door with Sunburst, Deadbolt and Storm
- 32" 6-Panel Fiberglass Rear Door with Deadbolt
- Keyed Alike Contractor Locksets
- 12" Overhang – Ends
- Two Deluxe Exterior Lights at Front Door
- Porch Light at Rear Door
- 15" Vinyl Raised Panel Shutters – Front and Door Side
- Vinyl Low E Insulated Glass Windows with Grids
- Residential 20' Double Dormer with Decorative Louvered Sunburst (Except Hearthside V)
- Box Bay Window
- Ridge Vent
- Exterior Frost Proof Faucet
- Deck Dri Ice Shield

CONSTRUCTION

- Energy Star Construction
- Detachable Hitch
- Steel I-Beam Basement Frame 30#
- 2" x 6" Floor Joist – 16" O.C.
- 2" x 6" Sidewall Studs – 16" O.C.
- 30# Roof trusses
- Self-Sealing Fiberglass Shingles – 25 Year Warranty
- HUD Seal



*ENERGY SAVING FEATURES INCLUDED:

- Air Exchange, Power Bath Exhaust Fans, Extra Insulation, and Fiberglass Heat Duct.

* HEARTHIDE MODULAR CONSTRUCTION PACKAGE

- Returnable Carrier
- 2" x 10" Floor Joists – 16" O.C. with Double Rim Joist
- 5/12 Hinged Truss Type Rafters – 24" O.C.
- Double 2X Top Plates on Exterior and Mating Walls
- Single 2X Bottom Plates on Exterior and Mating Walls
- Double 2X Window and Door Headers
- Single 2X Top and Bottom Plates on all Interior Walls
- MH-15 Roof Underlayment
- All Plumbing Stubbed Through the Floor
- 3" Main DWV Vent Through Roof

Revised 3/10/09